

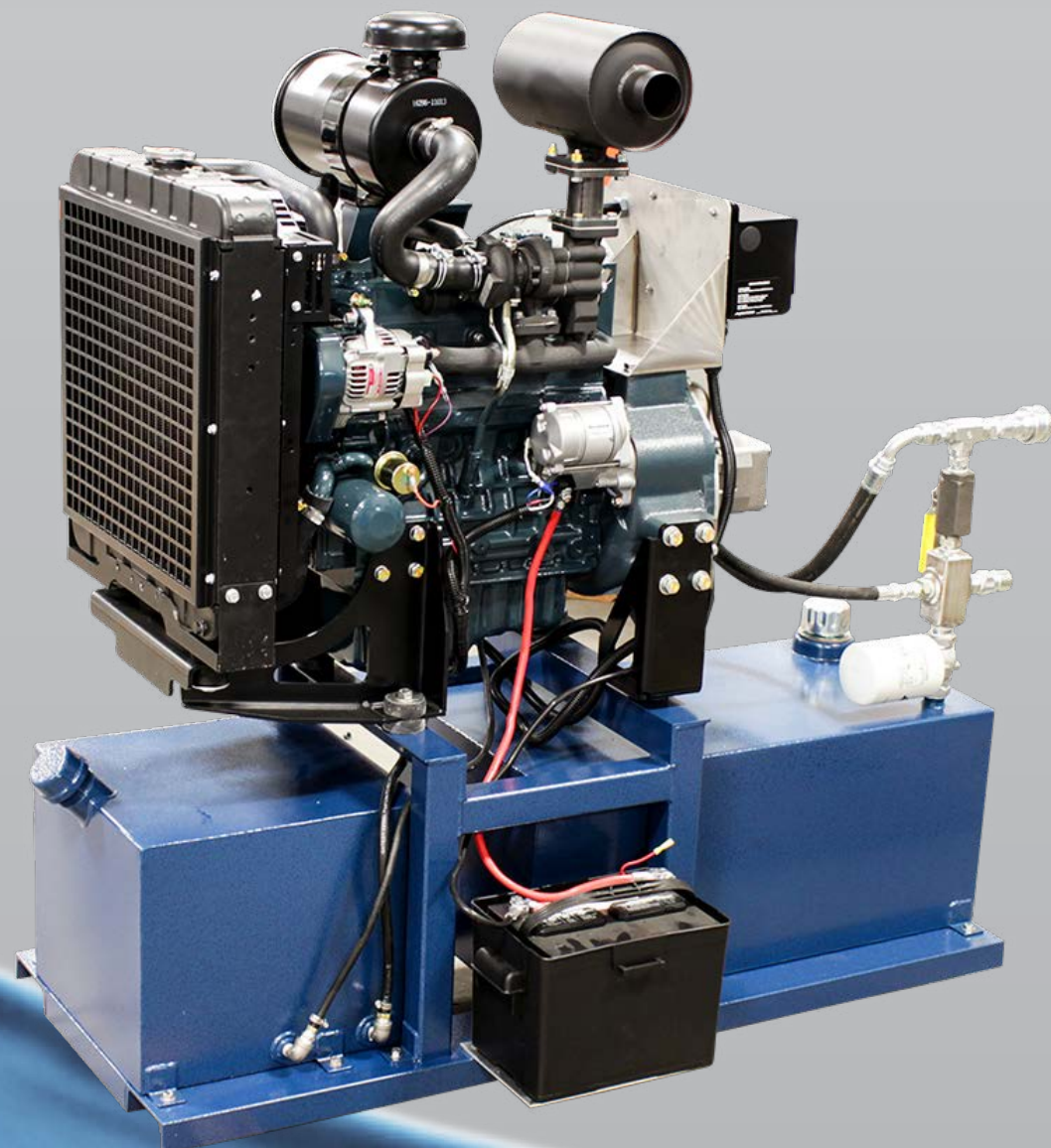
# Hydraulic Transfer Pump



**BP60-H**



**BP80-H and Gas Power Unit**



**Diesel Power Unit**



	<b>BP40 - H</b>	<b>BP60 - H</b>	<b>BP80 - H</b>
<i>Inlet/Outlet Size</i>	4 in (100mm)	6 in (150mm)	8 in (200mm)
<i>Fish Pumping Cap</i>	8 t/hr	16 t/hr	24 t/hr
<i>Pump Output Max</i>	800 gpm	1200 gpm	2400 gpm
<i>Maximum Head</i>	29.5 (9m)	36 (11m)	29.5 (9m)
<i>Maximum Distance</i>	1200m	1200m	1200m
<i>Maximum Avg Fish Size</i>	300g	600g	1.5kg