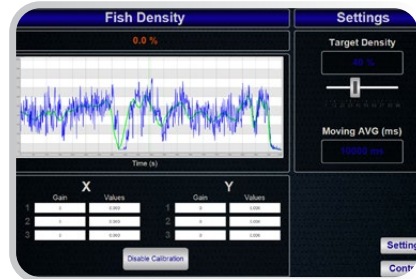


BioTrac “Fish Smart” Features



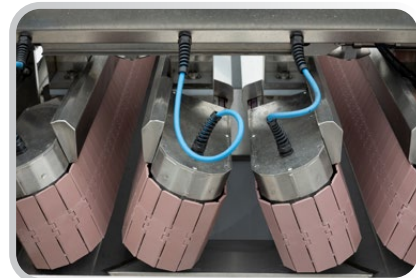
Intuitive Digital Touch Screen Controls

Farm Specific Fish Size Data Tables
Digital Actuator Gap Adjustment
Integrated On-Screen Aqua-Scan Control
Fish Density Monitoring



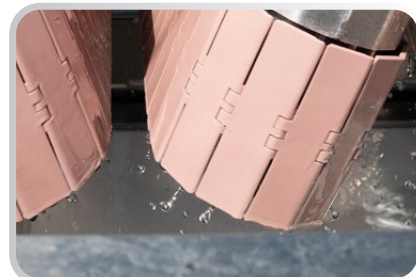
Three Stage Crowd Control Light Bar

360 Degree Line of Sight
Visual Indicator of Crowd Status
Green/Increase - Yellow/Status Quo
Red/Decrease



True Magnetic Motor Drives

316 Stainless Steel Construction
Delivers Full (Constant) Torque at All Speeds
Eliminates High Maintenance Gear Reduction Boxes



Water Filming System

Unique Design Ensures Fish Safety
and Reduced Belt Wear

No Drop Fish Exit System

Fish Exiting the Grade Channels are Gently
Released Onto Curved Slide Surfaces
Eliminating Scale Loss and Stunning

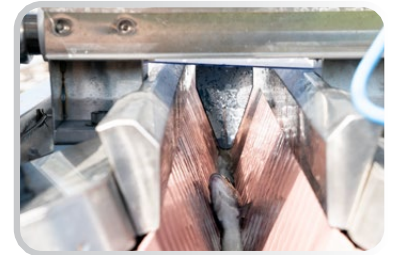


Reversible Discharge Outlets

Optional Easy Mount
AquaScan Counting System

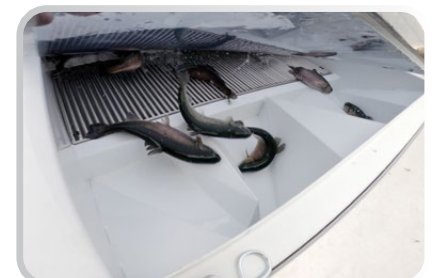
Larger Grade Channels with “Soft Finger” Feature

Fish move through the grader channels falling into either
2-3 or 4 separate channels



High-Capacity Removal Dewatering System

High Efficiency S.S Dewatering Rack
Orientation and Alignment Platform
Singulation Grade Channel Inlets



SINCE 1975

Key Points



- Grader Estimated Capacity
- Compact design with intuitive operation
- Fish entering the grade channel:
Entrance plate and inlet nozzle
- Water Filming for fish safety and reduced wear
- Grade Channel Accuracy
 - Welding
 - Machining
- Grader Lower Pan to minimize drop
- Larger Grade channel to keep fish in the grading area
- Controls
- Farm Specific fish size data for quick adjustment
- Integrated Aqua-Scan Control
- Crowd density indicator

Options:

- 2 meter and 2.5meter grade channel Lengths
- 2-3-4 grade channel options
- 3 belting options for more specific fish sizes



MAGIC VALLEY HELI-ARC & MFG., INC
198 Freightway Street • PO Box 511 • Twin Falls, Idaho 83303-0511
USA Phone (208) 733-0503 • USA Fax: (208) 733-0544
info@aqualifeproducts.com

www.AquaLifeProducts.com

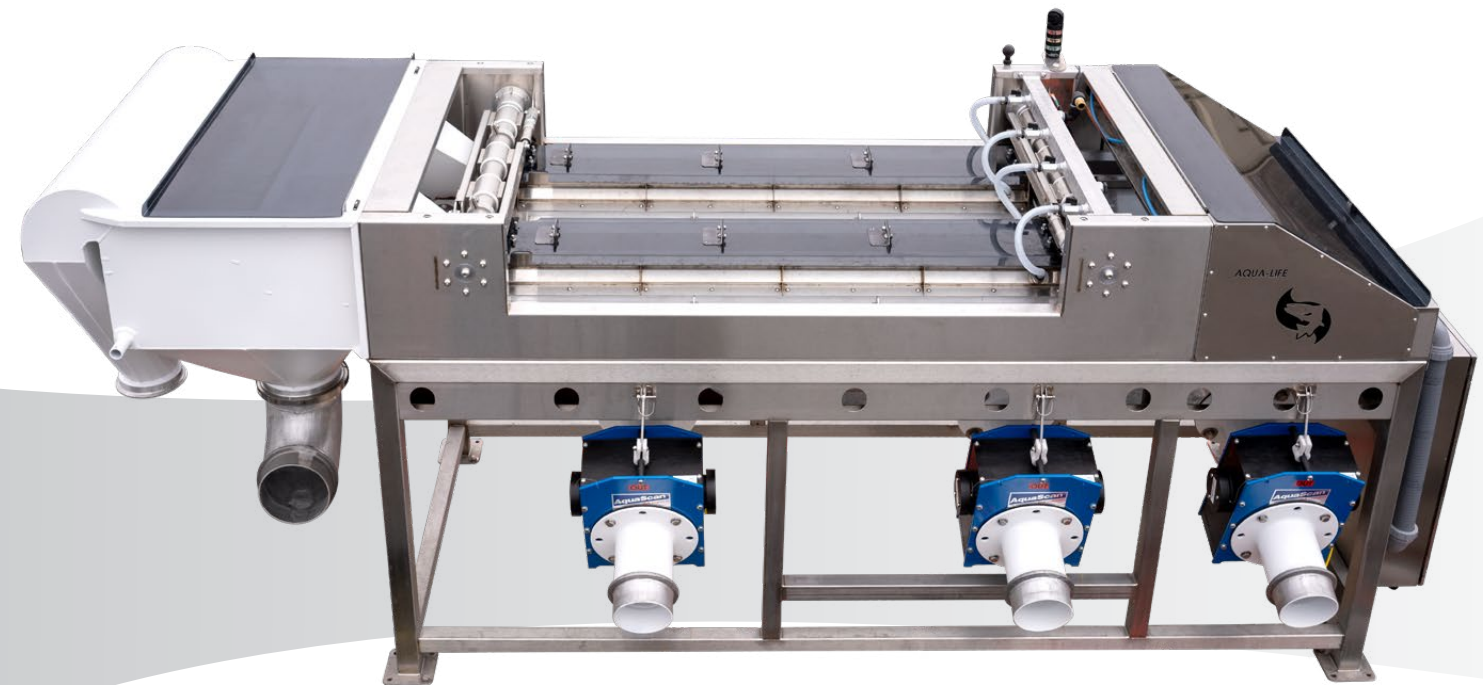
Aqua-Life

PRODUCTS



new BioTrac Belt Grading System

Designed with Aqua-Life's 50 Years of "Fish Smart" Engineering Experience!



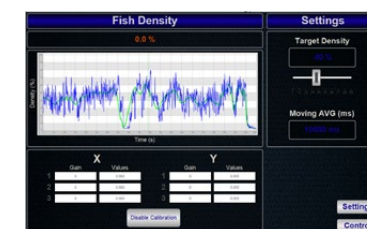
The driving inspiration in the design of the BioTrac Grading System was to take previous Belt Grader Designs to a whole new level of **Precision, High Volume Output, and Intuitive Digital On-Screen Operation**, all in a **Compact Design**.

The BioTrac's **Stainless Steel** construction has been greatly enhanced by Aqua-Life's "State of the Art" manufacturing capabilities utilizing the latest **Laser Welding Technologies, CNC Machining** and **Robotics** to obtain unmatched **Precision, Rigidity and Longevity**.

OPTIONAL



Status			
File Name	Start Weight	Count	% of Total Count
Date & Time	Start Weight	Count	% of Total Count
CH	Average Weight	Total Weight	Count
1	350.0 g	312.0 g	100%
2	275.0 g	815.0 g	15.5%
3	375.0 g	861.0 g	16.4%
4	420.0 g	915.0 g	16.4%
5	5.0 g	5.0 g	100%



Integrate AquaScan Control

Density Measurements